



TENTSILE

Vista

OWNER'S MANUAL

CONGRATULATIONS

YOU ARE NOW THE
PROUD OWNER OF A
TENTSILE VISTA

WARNING

TENTSILE IS NOT A TOY

RISK OF SERIOUS INJURY

A VISUAL AND TACTILE INSPECTION OF YOUR
TENTSILE'S FLOOR, STRAPS AND RATCHETS
SHOULD BE MADE BEFORE EACH USE.

CHECK THE HEALTH AND STRENGTH OF THE TREES
CHOSEN TO BE ANCHOR POINTS BEFORE USE.

Recommended set up height 1.2m / 4 feet
MAX LOAD 400kg/ 880lbs

Contents

2 Introduction

3 Terms of Use

4-5 Set-Up Guide

6 Specifications

7 Calibration

8 Ratchet Use

9 Policies

10 Risk Assessment

12 Other Products



Introduction

The Tentsile Vista provides a unique opportunity for you and your friends to experience a whole new level of freedom!

Tentsile tree tents were conceived as portable treehouses you can take with you anywhere. They combine the versatility of a hammock with the comfort and security of a tent. This light-weight solution to multi-level camping is also able to shelter up to 6 people when used in conjunction with a Tentsile Trillium or three standard hammocks.

The Vista comprises a spacious triple hammock, able to be accessed from all sides and suspended in tension above the ground. It is covered with a fully removable, elegant fly sheet roof and clip-in insect mesh.

The unique design creates a comfortable base camp, irrespective of ground conditions as well as providing increased protection from insects, snakes and other predators – if you venture somewhere more exotic.

We created this product because we love trees and believe that if we're all hanging out in trees, they can't cut them down!

We plant 3 trees for every tent we sell. :)

PLAY, CAMP, EXPLORE...
#Freedom #Tentsile



Terms of Use

Tentsile tree tent should be set up only as outlined in this manual.

Do not use walls, fences, street furniture, roof racks, posts or tree less than 40cm / 15 inches in diameter as anchor points as they may not be strong enough.

Do not use tensioning components other than those supplied with this product.

Do not set up higher than 1.2 metre / 4 feet from the ground or above hard, sharp or pointy objects.

Tactile and visual checks should be made to ALL tent components and ALL anchor points before each use.

Replace any damaged elements if any are found.

Keep away from fire and sharp objects.

Do not be use after the consumption of any intoxicating substances.

Children must be supervised by an adult at all times.

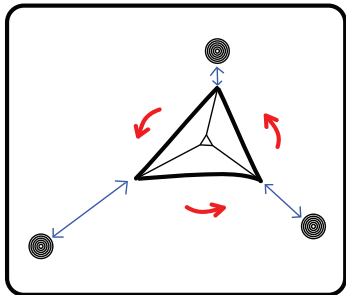
Do not attach to trees or branches that show signs of structural weakness.

Do not adjust or open ratchets whilst tent is occupied.

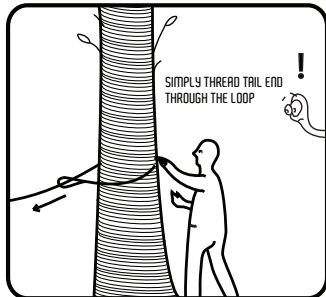
Do not use during lightning storms or high winds.

Do not use in areas of unstable ground.

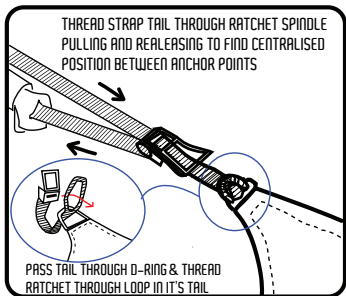
Tentsile does not offer protection from all animals.



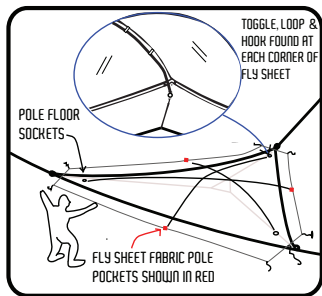
1. READ ALL INSTRUCTIONS CAREFULLY.
2. DRAG AND ROTATE TENT AS NEEDED TO ALIGN CORNERS TO CHOSEN TREES.



3. CHOOSE 3 STRONG ANCHOR POINTS.
4. GIRTH LONG STRAPS TO TREES KEEP LEVEL WITH EACH OTHER.

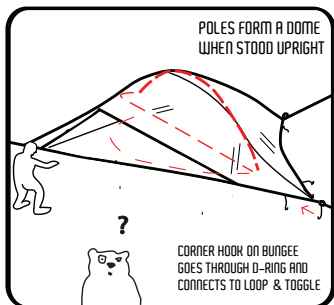


5. GIRTH BUCKLE TO CORNER D-RINGS AS SHOWN ABOVE OR USING A CARABINER. ENSURE ALL CONNECTIONS ARE SECURE.

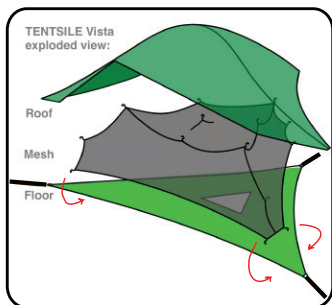


6. OVERLAY FLY SHEET, FASTEN UNDER CORNERS USING TOGGLES & LOOPS.
7. SLIDE POLES UNDER FLY, PUSH POLE INTO CORNER BLACK SOCKETS ON THE FLOOR & SLIP INTO FABRIC POCKETS ON FLY SHEET.

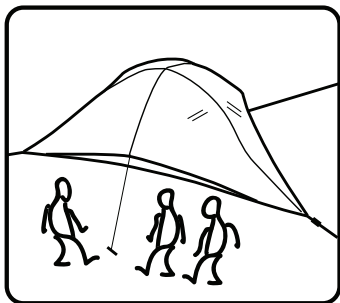
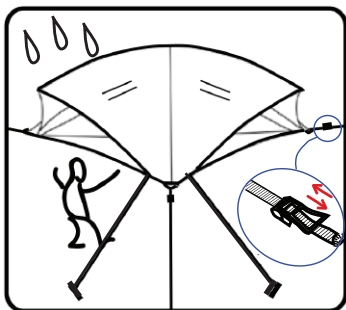
Set Up Guide



8. LIFT POLES UNTIL PERPENDICULAR TO FLOOR AND TIE TOGETHER AT APEX.
9. SECURE POLES WITH FLY C-CLIPS.



10. CLIP INSECT MESH TO POLES INSIDE THE FLY SHEET CANOPY & SECURE THE CORNERS BENEATH THE VISTA FLOOR



12. INCREASED WIND PROTECTION CAN BE ACHIEVED BY TYING DOWN THE PEAKS OF THE PORCHES.



Specifications

Size: 4.4m x 4.4m x 4.4m / 15 x 15 x 15'

Floor area: 7.5sqm / 80sqf

Dry porch area at ground level: 8sqm / 85sqf

Entry Points: x 4

Bag Size: 59 x 25 x 25cm / 23 x 10 x 10"

Height: 120cm / 4'

Tent weight: 5.4kg / 11.8lbs (+1.1kg / 2.4lbs per ratchet)

Poles x 3: 11mm diameter anodised aluminium alloy

Flysheet: PU coated waterproof polyester 190D 3000HH in a choice of 5 colors.

Clip-in, removable tear resistant insect mesh

Floor: 220D PU coated hexagonal inclined joint polyester-nylon composite, reinforced with 20 metres of seat-belt webbing.

Ratchets & straps: 35mm heavy duty industry grade straps - 2.5 tonne minimum breaking strength.

Maximum capacity: 3 adults and their gear or 2 adults and 2 children.

All tents are US CPAI-84 & Canadian F-16 fire rated.

DO NOT EXCEED MAXIMUM LOAD 400kg / 880lbs



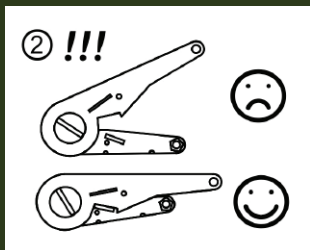
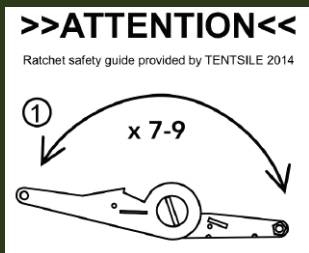
Floor Strap Calibration

1. Put one tent up with each corner pointing **DIRECTLY** at the respective tree.
 2. Each strap should be looped around the tree 1.2m / 4 feet above the ground.
 3. Raise the tent so it's about 4 feet off the ground. Do not tighten much yet.
 4. Align the tent perfectly. The best way to do this is to stick your head under each orange strap (by the tree) and look towards the middle of the tent. You will see down each strap and under the tent. The orange strap should align perfectly straight with the underfloor strap. You may have to loosen some ends and tighten others until you get those **STRAIGHT LINES**. This is important.
 5. During recalibration, make sure the underfloor buckles are loose at this point.
 6. Then tighten the orange straps a bit using the ratchets so the floor becomes flat(ish). You need medium tension at this point. (About half your maximum strength, or the maximum strength of a child)
 7. At each corner take the end of each underfloor seatbelt strap in your hand and give it a good yank away from the buckle towards the middle of the tent.
 8. Stick the poles through the sleeves, into the yellow pocket at the far end and into their respective sockets each side of the front door.
 9. Raise the tent fully and tighten the orange ratchets/straps **AS HARD AS YOU POSSIBLY CAN**. Pull through as much slack in the orange straps before you start tightening. The ratchet will only take about 7-9 back-and-forth movements before the spindle becomes full. Do not overload the ratchet spindle as it could prevent locking, and make sure it is **LOCKED SHUT** when you're done.
- At this moment, if you sit inside the tent the straps that are around your sitting area should be equally raised around you and at an equal height to each other (similar to a shallow bathtub where both sides of the tub are at the same height and above the middle seating area - so the water wouldn't spill out).
- 9a. If the middle underfloor straps are lower then you can loosen one orange ratchet/strap, then tighten each of those underfloor seatbelt straps by an extra centimetre and then try again.
- (Alternatively, if they are higher, then loosen the floor straps by 1cm / 1/2 inch.)



How to use a Ratchet

- 1) Take tail end of the long strap around your trees and thread through the loop and towards your Tentsile.
- 2) Thread short end of the ratchet strap through the D-Ring at the corners of your Tentsile and take the buckle through the loop.
- 3) Take long strap's tail and thread it downwards through the ratchet buckle spindle. Ratchet a few times to lock strap into the buckle before moving to the next corner.
- 4) Repeat step 3 for each corner, trying to keep each tent corner pointing towards their respective trees. Pull through all excess orange strap before final ratchet tightening.
- 5) Revisit all corners and adjust as necessary, looking down the line of each strap to centralise your Tentsile between your chosen anchor points. You have about a 5 degree margin of tolerance.
- 6) Tighten as much as you can. **ENSURE RATCHETS ARE IN LOCKED POSITION.**
- 7) Tie a knot in the tail end of the strap through the ratchet buckle handle (as a fail safe) to ensure it cannot be opened accidentally.





Policies

Maintenance

Visual and Tactile inspection of all components for structural damage before every use and dry out Tentsile thoroughly before packing away.

Returns

You can return this product, unused within 4 weeks of purchase and expect a full refund or replacement. If a manufacturing defect occurs within 1 year of reasonable* use, the product can be returned for repair or exchange.

*no more than 3 months continuous use.

Warranty

This one year warranty covers all manufacturing faults of fabrics, parts and workmanship. This warranty covers the functionality of the product for its normal, intended use as specified in Tentsile's consumer literature, incl. website.

It does not cover poles or malfunction of any component that has resulted from improper or unreasonable use or neglectful maintenance, the user's use of undersized or unhealthy trees, sharp objects or fire near the tent or the use by more than the recommended number of persons, at the recommended set up height.

This policy does not cover damage incurred by environmental conditions, weather conditions, or apocalyptic events.

Contact us

info@tentsile.com

We are here to help.



Risk Assessment

POSSIBLE EVENT	LIKELIHOOD	INJURY LEVEL	RISK LEVEL	STEPSTAKEN / INSTRUCTION
Strap Failure	low	medium	medium	2.5 tonne rated straps used
Seam Failure	low	medium	medium	Heavy duty thread used
Fabric Failure	low	medium	medium	Reinforced fabric used
D-Ring Failure	low	medium	medium	8mm steel used
Incorrect set up	medium	low	medium	Follow Guide
Release of Ratchet to Occupied Tent	low	low/ medium	medium	Ratchets can be padlocked shut
Occupant falling out of door	low	medium/ high	high	Limited height of opening reduces risk of fall
Occupant Falling Through Hatch	medium	medium	medium	Hatch is small to minimise risk
Anchor Point Failure	low	medium/ high	high	Only use trees 40cm / 15" + diameter
Over Loading Tent	low	low/ medium	medium	Maximum load 400kg
Use after structural Damage	low	low/ medium	high	Do not use when damaged
Falling onto Sharp, Pointy or Hard Surface	medium	high	high	Do not set up over dangerous ground



Risk Assessment

ANYOF THE PREVIOUS at height greater than 1.2m/4ft	low	high	high	Recommended Set Up height at 1.2m/ 4 feet
Fire	low	high	high	Retardant fabrics used
Lighting Strike	low	high	high	Do not use in storm
Pole breaking and causing injury	low	medium	medium	Reinforced sleeves
Walking into tension Straps	medium	low/ medium	high	Straps are orange for increased visibility
Hand injury on Ratchets	low	low/ medium	medium	apply caution
Over Tensioning	low	low	low	Over tension tested
Flooding beneath	low	medium	medium	Avoid flood prone areas
Falling objects including but not limited to, coconuts, branches, fruit..	medium	medium/ high	high	Use common sense and beware of environmental conditions including weather
Falling out at night	medium	medium/ high	high	Keep doors closed
Sleep walkers	low	medium/ high	medium	Use at your own risk
Wild animals/ Zombie Attack	low	high	high	Zombie proof design



Other Tentsile Products



TENTSILE CONNECT



TENTSILE STINGRAY



TENTSILE TRILOGY



TRILLIUM TRIPLE HAMMOCK
(available in Fabric or mesh)



LIGHTWEIGHT LADDER



HATCH COVER



Other Tentsile Products



STINGRAY / VISTA DRINKS
HOLDER



TREE PROTECTOR STRAP



SPARE RATCHET + STRAP



DMM CARABINER



LUMINAID SOLAR LIGHT



GIANT 10" PEG (3 PACK)

